



## Introduction

The Cann down light with traditional deep reflector (UGR<19) that provides perfect combination of high lighting efficiency, comfortable lighting and humanization design, without compromising on light performance (color rendering and color uniformity); It offers a wide choice of options for creating the desired ambience.

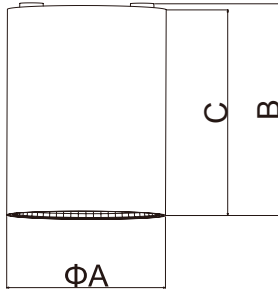
### Features

1. High luminous efficiency.
2. 24°, 36°, 60° beam angle optional.
3. Easy installation and maintenance.
4. UGR<19 (not available for 25/35W 60° beam angle).

### Application Areas

It is designed for general lighting applications in hotel, home, office, shop etc. It is also widely used for public areas such as stairway, lobby, reception, corridors etc.





## Measurement

Model	Dimension(mm)			Size(mm)	Product Weight (Kg)		Package weight (Kg)		Carton Size(cm)	Qty/CTN	20GP (pcs)	40HQ (pcs)
	A	B	C		N.W/PC	G.W/PC	N.W/CTN	G.W/CTN				
DL176-15W	100.4	133.8	130	Ø100*134	0.65	0.74	11.7	14.32	38*37.5*36	18	9720	23436
DL176-25W	120.4	143.8	140	Ø120*144	0.84	0.99	10.08	12.88	47*31.5*38	12	6120	14448
DL176-35W	170	159	155	Ø170*159	1.45	1.65	8.7	10.8	60.5*21*41	6	3060	7524

## Technical Data Sheet

Model No.			LT176-15W	LT176-25W	LT176-35W
Watt(W)			15W	25W	35W
Dimension(mm)			Ø100.4*133.8	Ø120.4*143.8	Ø170*159
Rated Input Voltage(V)			AC230V		
Input Voltage(V)			AC200-240V		
LED			COB		
SDCM			-		
CCT(K)			1-CCT: 2700K / 3000K / 4000K / 5000K		
"Luminous Flux (lm) ±5%	1-CCT	Non-DIM	1400~1750	2300~2800	3200~3900
		DIM	1300~1670	2180~2660	3040~3710
CRI			≥80		
Beam Angle (°)			24° / 36° / 60°		
UGR			< 19 (not available for 25/35W 60°beam angle)		
LED Driver			Built-in		
DIM			Triac		
CCT Selection Switch			No		
Protection Class			Class I		
IK Rating			IK03		
IP Rating			IP54		
Finishing color			White RAL 9016		
Material			Aluminum		
Lifetime (hr)			50,000		
Glow wire test (°C)			850°C		
Operating Temp.(°C)			-20°C ~45°C		
Storage Temp.(°C)			-20°C ~65°C		
Installation			Surface mount		
Brand Driver option			-		

## Driver Datasheet (Non-Dimmable)

Power	15W	25W	35W
Rated Input Voltage(V)	AC230V		
Frequency	50/60Hz		
Input Voltage	AC200-240V		
Efficiency	84%	86%	86%
Total load wattage	15W±1W	25W±5%	35W±5%
Power Factor	0.9	0.9	0.9
Rated Input Current	≤0.09A	≤0.15A	≤0.2A
Full load output voltage	DC30-40V	DC30-40V	DC30-40V
Rated output current	350mA	600mA	860mA
Output current range	350mA±5%	600mA±5%	860mA±5%
Power tolerance	±5%		
Current output tolerance	±5%		
Short circuit protection	PASS		
Over voltage protection	PASS		
Over temperature protection	PASS		
THD	<20% @ 230V		
Surge	L-N 0.5KV / LN-PE 1KV	L-N 1KV / LN-PE 2KV	
Withstand voltage	AC3750V		

## Driver Datasheet (Triac Dimmable)

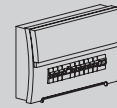
Power	15W	25W	35W
Rated Input Voltage(V)	AC230V		
Frequency	50Hz		
Input Voltage	AC200-240V		
Power Factor	0.9		
Efficiency	83%	83%	85%
Total load wattage	15W±1W	25W±5%	35W±5%
Rated Input Current	≤0.09A	≤0.14A	≤0.2A
Full load output voltage	DC30-40V	DC30-40V	DC30-40V
Rated output current	350mA	580mA	800mA
Output current range	350mA±5%	580mA±5%	800mA±5%
Power tolerance	±5%		
Current output tolerance	±5%		
Dimming Range	8%-100%		
Short circuit protection	PASS		
Over voltage protection	PASS		
Over temperature protection	PASS		
THD	<20%@230V		
Surge	L-N 0.5KV / LN-PE 1KV	L-N 1KV / LN-PE 2KV	
Withstand voltage	AC3750V		

Note: DALI & 0-10V driver specification, please refer to individual driver datasheet.

# Installation Procedure

## WARNING ⚡

1. Switch off before installation maintenance.
2. Switch on only after complete installation and examination of the circuit.
3. Professional electrician for installation and maintenance only.

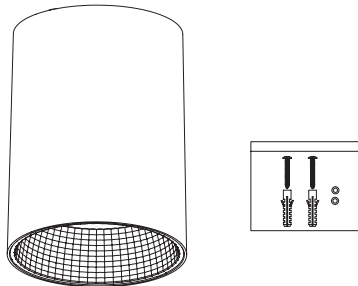


Turn Off  
Power Supply

Turn Off power supply before starting any installation. Read instructions & check you have all the tools & accessories to complete the installation correctly.

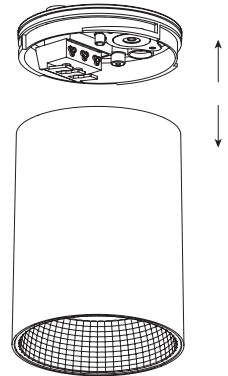
## Installation

### Step 1



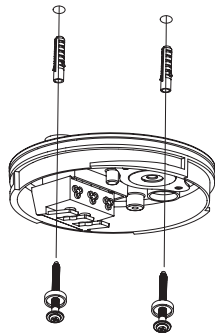
Take out the fitting and accessories.

### Step 2



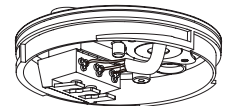
Take out the bracket from the fitting.

### Step 3



Knock the plastic anchor into ceiling, fix the bracket on the ceiling.

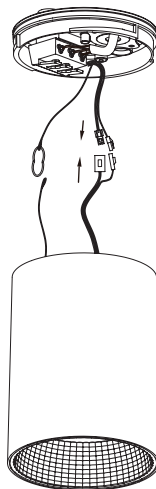
### Step 4



- L = BROWN
- N = BLUE
- ⊕ = YELLOW-GREEN

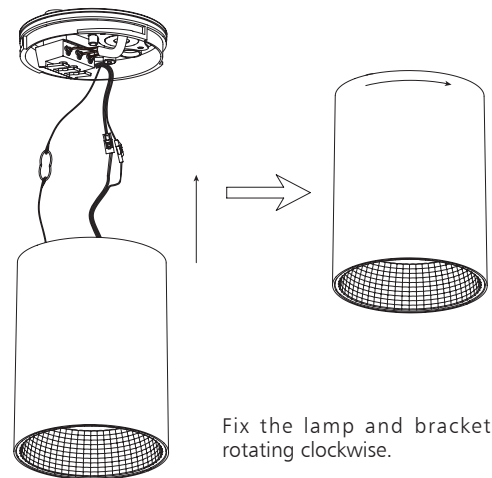
Connect the main wires to the terminal in the bracket.

### Step 5



Connect the safety rope, and plug the earth wire connector, then plug the male and female connector.

### Step 6



Fix the lamp and bracket by rotating clockwise.

### Step 7

