



Introduction

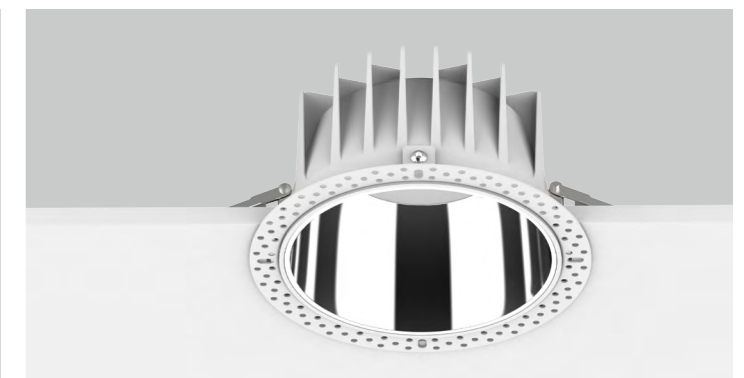
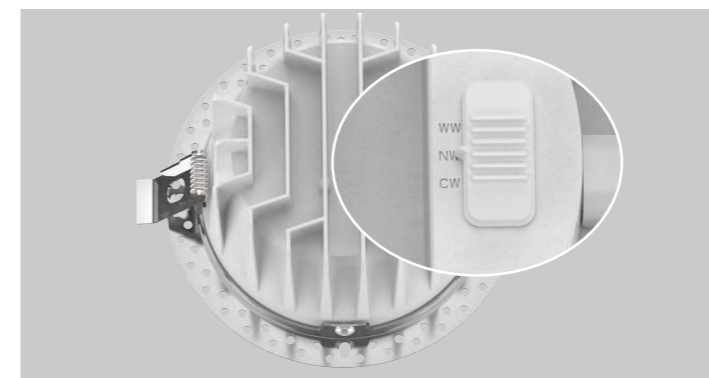
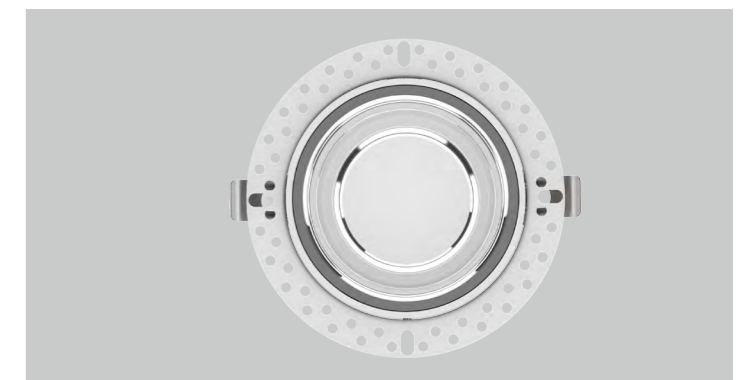
This downlight with traditional deep reflector which provides a perfect combination of high lighting efficiency, comfortable lighting and humanization design, without compromising on lighting performance (color rendering and color uniformity). CCT changeable function is available. It offers a wide choice of options for creating the desired ambience. Two frame options: Standard frame and invisible frame, complete size from 2.5inch to 10inch.

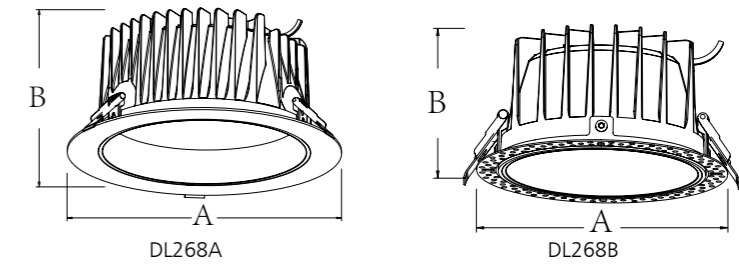
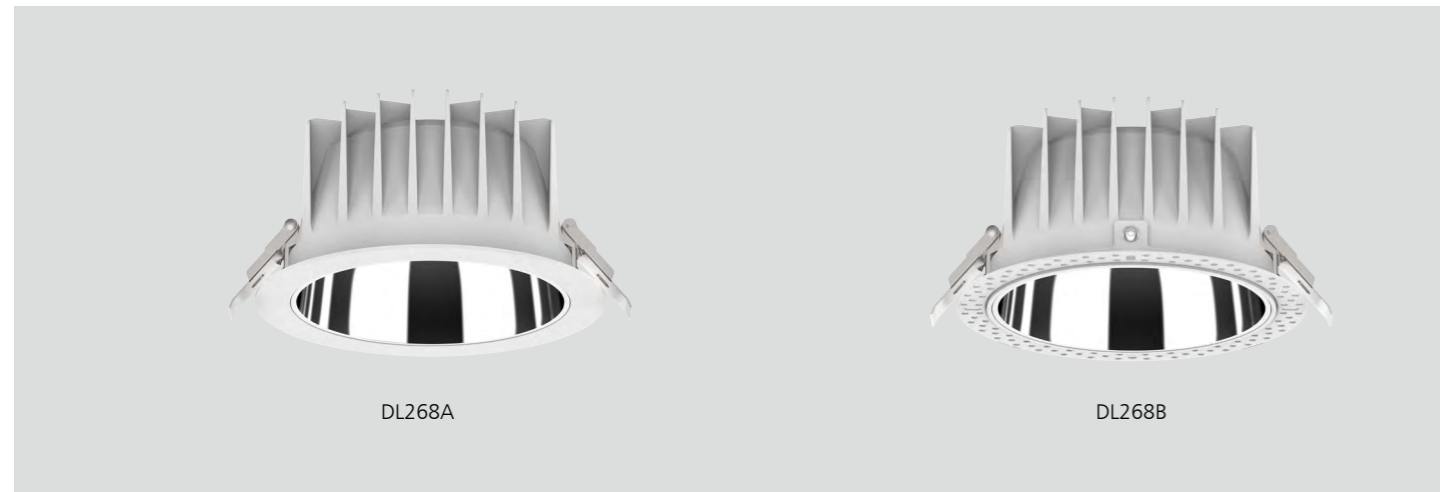
Features

- Two frame options: Standard frame & invisible frame (Can be hidden with a paintcoat)
- Deep reflector design with a comfortable visual effect.
- High lumen efficiency, 100-110lm/W.
- Interchangeable CCT(3000K/4000K/5700K) with slide switch.
- IP54 for indoor use only.
- Complete sizes:2.5/3/4/6/8/10inch.
- Wide power range: 10/13/18/25/35/45/50W.
- Flicker free external driver, triac dimmable, DALI, 0-10V available.

Application Areas

It is designed for general lighting applications in office, supermarket, shop, school, hotel, etc. It is also widely used for public areas, such as stairway, lobby, reception, corridors etc.





Measurement

Code	Dimension(mm)		Size(mm)	Product Weight (Kg)		Package weight (Kg)		Carton Size(cm)	Qty/CTN	20GP (pcs)	40HQ (pcs)
	A	B		N.W/PC	G.W/PC	N.W/CTN	G.W/CTN				
DL268A/B-2.5	95	55	Ø95*55	0.27	0.315	9.72	12.07	48.5*37*29.5	36PCS	18684	44712
DL268A/B-3	108	55	Ø108*55	0.29	0.345	10.44	13.15	48.5*37*29.5	36PCS	18684	44712
DL268A/B-4	145	77	Ø145*77	0.58	0.66	10.44	12.63	50*34*38.5	18PCS	7884	17892
DL268A/B-6	172	90	Ø172*90	0.69	0.9	8.28	11.6	59*40*23.5	12PCS	5904	14184
DL268A/B-8	228	107	Ø228*107	1.13	1.36	13.56	17.36	52*52*38.5	12PCS	3168	7104
DL268A/B-10	280	123	Ø280*123	1.55	1.86	9.3	12.2	64*33*49	6PCS	1716	3930

Technical Data Sheet(1)

Code No.	LT268-2.5-10W	LT268-3-10W	LT268-3-13W	LT268-4-10W	LT268-4-18W	LT268-4-25W	LT268-6-18W	LT268-6-25W	LT268-6-35W		
Dimension(mm)	Ø95*55	Ø108*55		Ø145*77			Ø172*90				
Cutout (mm)	Ø82-88mm	Ø90-95mm		Ø125-135mm			Ø150-165mm				
Watt(W)	10W		13W	10W	18W	25W	18W	25W	35W		
Rated Input Voltage(V)	AC220-240V										
Input Voltage(V)	230V										
LED Module Input	-										
Light Source	SMD 2835										
SDCM	<6										
CCT(K)	1-CCT: 3000K/4000K/5000K/5700K 3-CCT: 3000K + 4000K + 5700K										
CCT Selection DIP Switch	YES										
Luminous Flux (lm) ±5%	Non-DIM	1-CCT	850-950	850-950	1000-1200	1000-1100	1800-1900	2200-2400	1800-2100	2500-2650	3300-3500
			DIM	800-900	800-900	940-1200	930-1100	1650-1800	2100-2300	1700-1900	2300-2500
	Non-DIM	3-CCT	830-900	840-950	1000-1200	920-1000	1600-1800	2200-2500	1900-2100	2400-2600	3200-3400
			DIM	770-880	800-900	900-1100	900-960	1600-1800	2200-2300	1800-2100	2300-2500
CRI	Ra>80										
Beam Angle (°)	70°			75°							
UGR	-										
LED Driver	Built-out										
Dimming Option	Triac dimmable / DALI / 0-10V										
Sensor	-										
Emergency Kits	-										
Electrical Class	Class II										
Ingress Protection (IP Rating)	IP54										
Impact Resistance (IK Rating)	IK06										
Product Finishing(Base)	White RAL9016										
Materials of Optics	PC										
Materials of Housing	Die-casting										
Lifetime (hr)	50,000h										
Glow wire test (°C)	650°C										
Operating Temp. (°C)	-20°C ~45°C										
Storage Temp. (°C)	-20°C ~65°C										
Installation	Recessed installation										

Technical Data Sheet(2)

Code No.	DL268-8-18W	DL268-8-25W	DL268-8-35W	DL268-8-45W	DL268-10-35W	DL268-10-45W	DL268-10-50W		
Dimension(mm)	Ø228*107				Ø280*123				
Cutout (mm)	Ø200-210mm				Ø230-260mm				
Watt(W)	18W	25W	35W	45W	35W	45W	50W		
Rated Input Voltage(V)	AC220-240V								
Input Voltage(V)	230V								
LED Module Input	-								
Light Source	SMD 2835								
SDCM	<6								
CCT(K)	1-CCT: 3000K/4000K/5000K/5700K 3-CCT: 3000K + 4000K + 5700K								
CCT Selection DIP Switch	YES								
Luminous Flux (lm) ±5%	Non-DIM	1-CCT	1800-2100	2500-2900	3600-4000	4400-4900	3600-3800	4500-4900	4800-5300
			DIM	1700-1900	2500-2700	3300-3800	4200-4700	3500-3700	4300-4700
	Non-DIM	3-CCT	1900-2100	2600-2800	3700-3900	4400-4900	3600-3800	4700-4900	4800-5300
			DIM	1800-2100	2500-2700	3600-3800	4300-4700	3500-3700	4500-4700
CRI	Ra>80								
Beam Angle (°)	80°								
UGR	-								
LED Driver	Built-out								
Dimming Option	Triac dimmable / DALI / 0-10V								
Sensor	-								
Emergency Kits	-								
Electrical Class	Class II								
Ingress Protection (IP Rating)	IP54								
Impact Resistance (IK Rating)	IK06								
Product Finishing(Base)	White RAL9016								
Materials of Optics	PC								
Materials of Housing	Die-casting								
Lifetime (hr)	50,000h								
Glow wire test (°C)	650°C								
Operating Temp. (°C)	-20°C ~45°C								
Storage Temp. (°C)	-20°C ~65°C								
Installation	Recessed installation								

Driver Datasheet (Non-dimmable)

Total load wattage		10W	13W	18W	25W	35W	45W	50W
Output	Output Voltage range	DC30-40V						
	Rated output current	250mA	320mA	450mA	600mA	850mA	1100mA	1250mA
	Line Regulation	±5%						
	Setup, Rise Time	≤0.5S						
	Flickering Index	0.5%(NO RISK)		0.8%(NO RISK)		0.5%(NO RISK)		
Input	Input Voltage	AC220-240V						
	Rated Input Voltage(V)	AC230V						
	Frequency	50Hz						
	Input Current	≤0.06A	≤0.08A	≤0.11A	≤0.14A	≤0.2A	≤0.25A	≤0.28A
	Rated Input Current	≤0.05A	≤0.06A	≤0.09A	≤0.12A	≤0.17A	≤0.22A	≤0.25A
	Power Factor	0.9						
	THD	<20% @230V						
	Efficiency	86%		88%				
	No load wattage	≤0.5W						
Protection	Short circuit protection	Pass						
	Over voltage protection	Pass						
	Over temperature protection	Pass						
Safety & EMC	Withstand voltage	I/P-O/P:3.75KVac, <5mA 60S						
	Isolation Resistance	I/P-O/P: 500VDC, ≥100M Ω						
	Surge	IEC/EN61000-4-5(P<25W; L-N:500V)			IEC/EN61000-4-5(P ≥25W; L-N:1KV)			
	EMC Emission	EN55015, EN61000-3-2						
EMC Immunity	EN61000-4-2,3,4,5,6,8,11; EN61547							

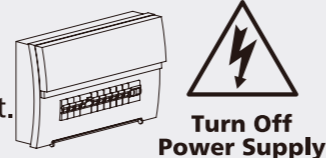
Driver Datasheet (Triac Dimming)

Total load wattage		10W	13W	18W	25W	35W	45W
Output	Output Voltage range	DC30-40V					
	Rated output current	230mA	300mA	430mA	580mA	800mA	1100mA
	Line Regulation	±5%					
	Setup, Rise Time	≤1S					
	Flickering Index	<5%(LOW Risk)					
Input	Input Voltage	AC220-240V					
	Rated Input Voltage(V)	AC230V					
	Frequency	50Hz					
	Input Current	≤0.06A	≤0.08A	≤0.1A	≤0.14A	≤0.2A	≤0.25A
	Rated Input Current	≤0.05A	0.08A	≤0.09A	≤0.13A	≤0.17A	≤0.22A
	Power Factor	0.9					
	THD	-		<20% @230V		<20% @230V	
	Efficiency	80%		83%		84%	
	No load wattage	<1W					
Protection	Short circuit protection	Pass					
	Over voltage protection	Pass					
	Over temperature protection	Pass					
Safety & EMC	Withstand voltage	I/P-O/P:3.75KVac, <5mA 60S					
	Isolation Resistance	I/P-O/P: 500VDC, ≥100M Ω					
	Surge	IEC/EN61000-4-5(P<25W; L-N:500V)			IEC/EN61000-4-5(P ≥25W; L-N:1KV)		
	EMC Emission	EN55015, EN61000-3-2					
EMC Immunity	EN61000-4-2,3,4,5,6,8,11; EN61547						

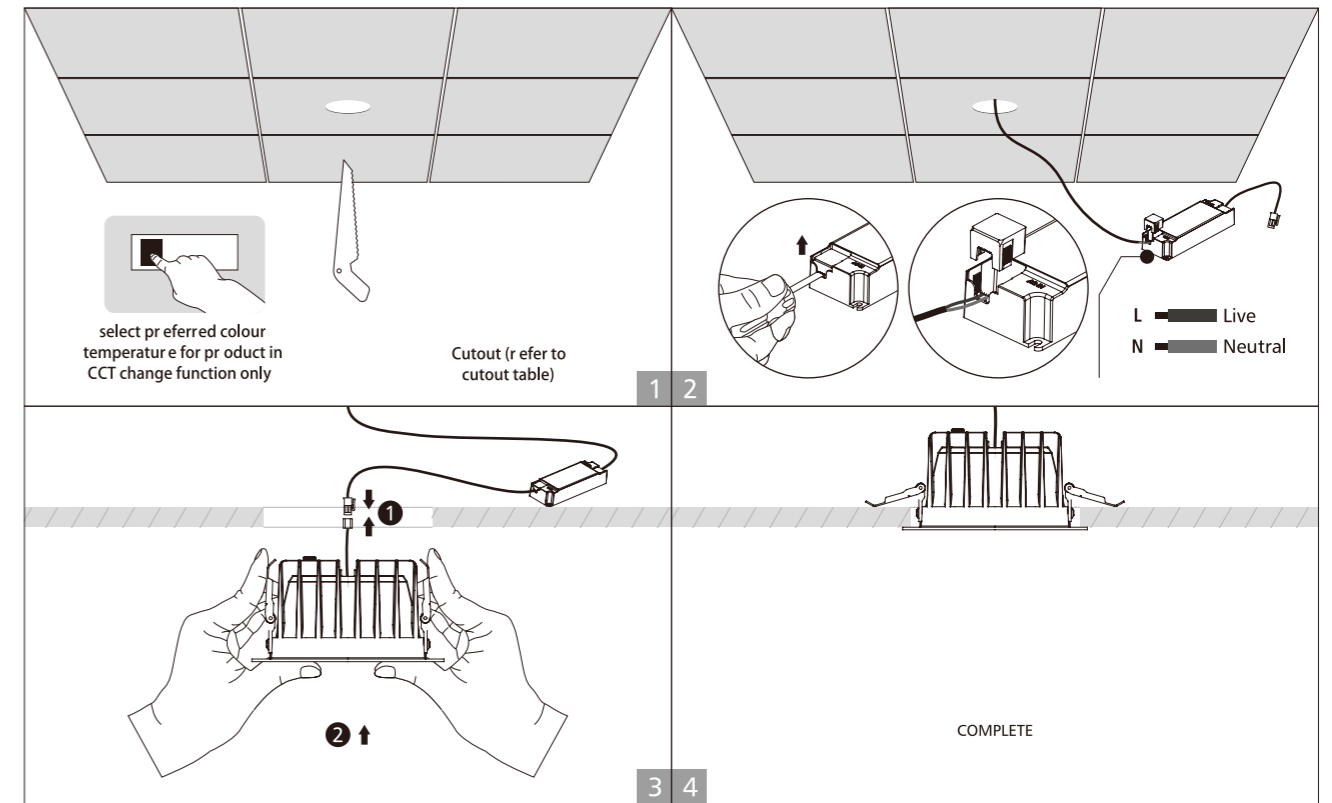
Installation Procedure

WARNING

1. Switch off power supply before installation / maintenance.
2. Switch on only after complete installation and examination of the circuit.
3. Professional electrician for installation and maintenance only.



Recessed A



Recessed B

